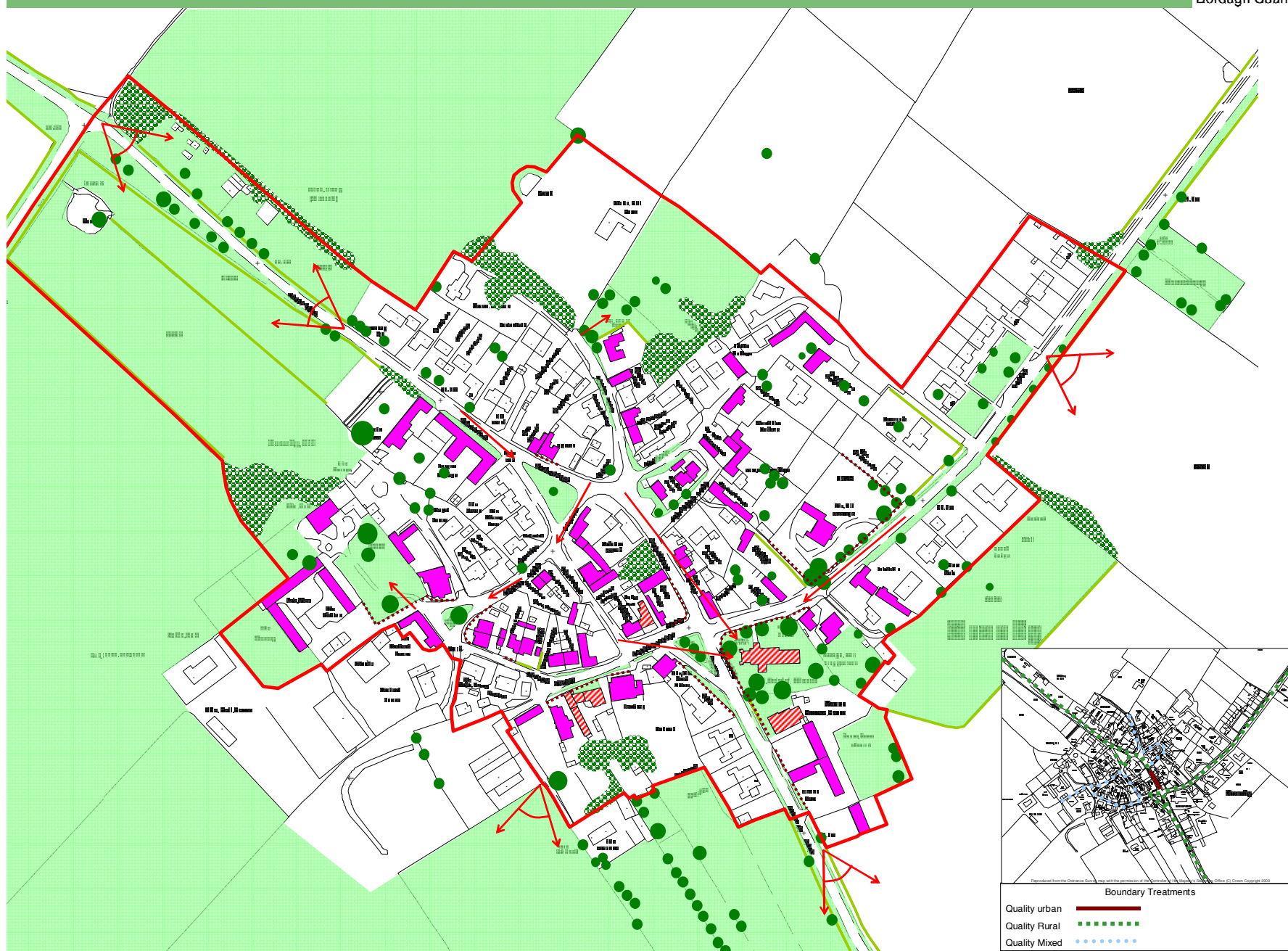


Townscape Appraisal

Note: A townscape appraisal is not a mapping exercise and the symbols illustrate the character of the area, rather than exact positions and sizes of individual features. No appraisal can be completely comprehensive and the omission of any particular building, feature or space should not be taken to imply that it is of no interest.



Not to scale



- View of positive building or landscape
- Panoramic (wide) view (medium to long distance)
- Listed Building
- Positive buildings (special architectural or historic character)
- Positive open spaces (landscape)
- Buildings with a negative impact
- Significant trees
- Significant groups of trees/woodlands
- Significant hedges
- Significant walls/ railings/ gates
- Conservation Area boundary



Reproduced from the Ordnance Survey map with the permission of the Controller of Her Majesty's Stationery Office (C) Crown Copyright 2009

This map is reproduced from Ordnance Survey material with the permission of Ordnance Survey on behalf of the Controller of Her Majesty's Stationery Office © Crown Copyright. Unauthorised reproduction infringes Crown Copyright and may lead to prosecution or civil proceedings. Rushcliffe Borough Council 1000019419